

# 3000 Series Miniature Rail Stage

A compact design with miniature rail bearings, G0, 1mm pitch ground ballscrew and travels from 25 to 100mm, the 3000 series linear stage offers stability and accuracy in a small package size.

Both 17 frame size stepper and small servo motors with encoders are easily integrated onto the stage, offering resolutions to 0.1 $\mu$ m and better.

Integrated mechanical datum and limit switches are common to all the models and connections are made by way of a secure 15 way D type connector.



## Specification

Travel mm	25	50	75	100
Ballscrew Drive	G0, Precision Ground, 1mm pitch			
Accuracy	2 $\mu$ m per 25mm travel			
Resolution	1 $\mu$ m (subject to control)			
Flatness and Straightness of travel	+/- 1 $\mu$ m per 12 mm of travel			
Bi-directional repeatability	+/- 1 $\mu$ m			
Load Capacity (kg)				
Stage Horizontal	10	10	10	10
Stage Vertical	4	4	4	4
Weight (kg)	0.6	0.65	0.7	0.75
Materials	Alumium Alloy and stainless steel			

Options:-

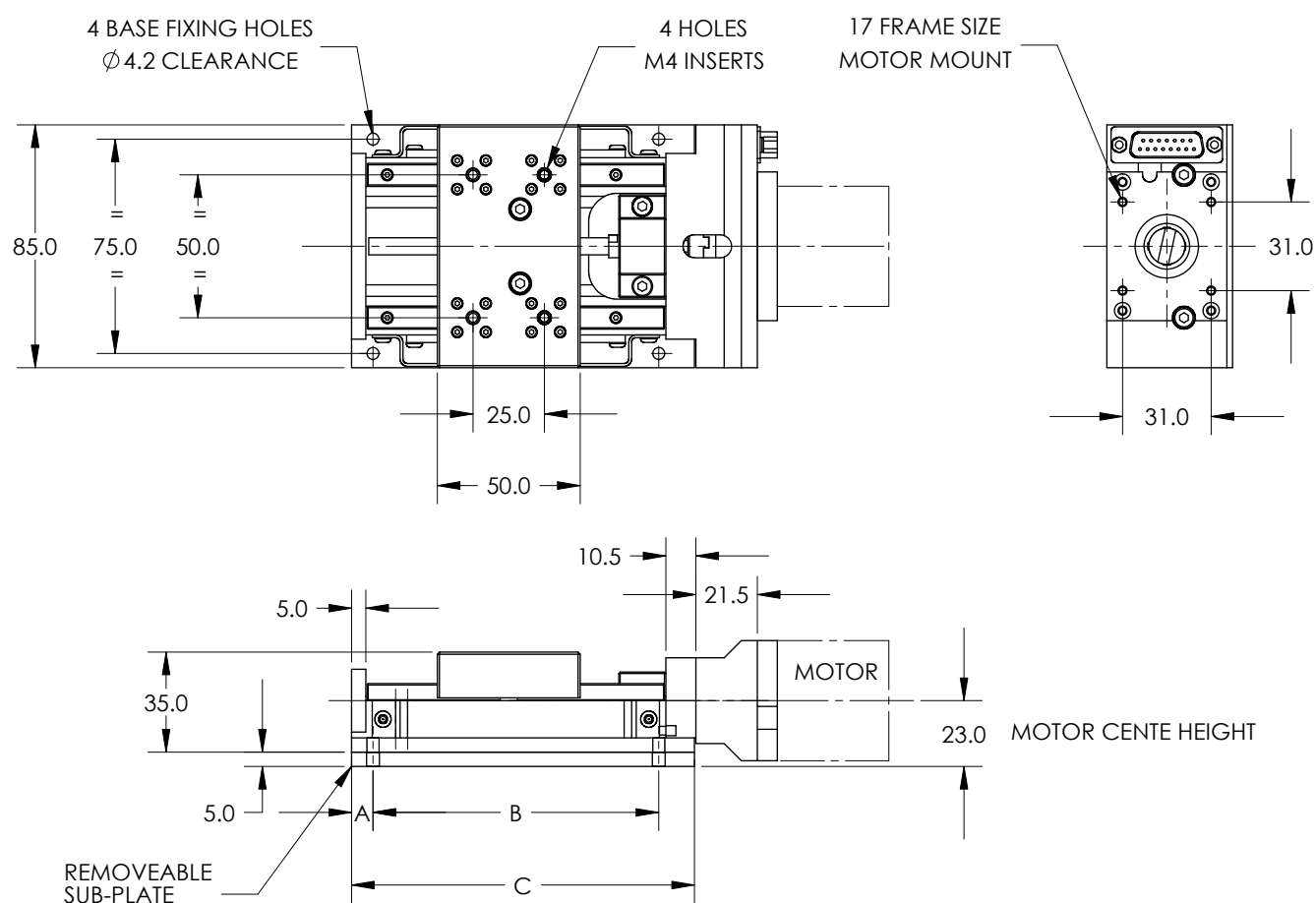
Leadscrew versions available

Special travels available on request

XY and Z bracketry, standard and bespoke

## 3000 Series Stage

### Dimensional Data



Max Travel (mm)	Dimensions (mm)		
	A	B	C
25	7.5	75	95
50	7.5	100	120
75	7.5	125	145
100	7.5	150	170